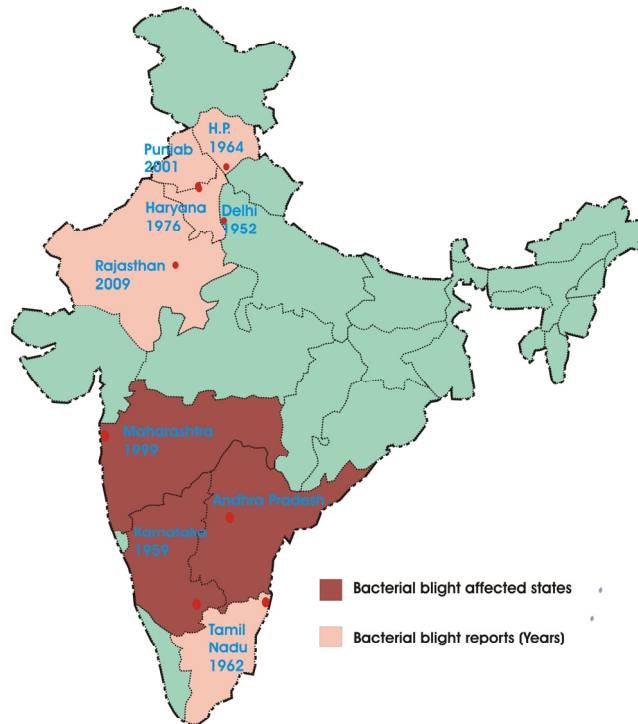


**Table 1** Prevalence and severity of bacterial blight of pomegranate in different States of India during 2005-2009.

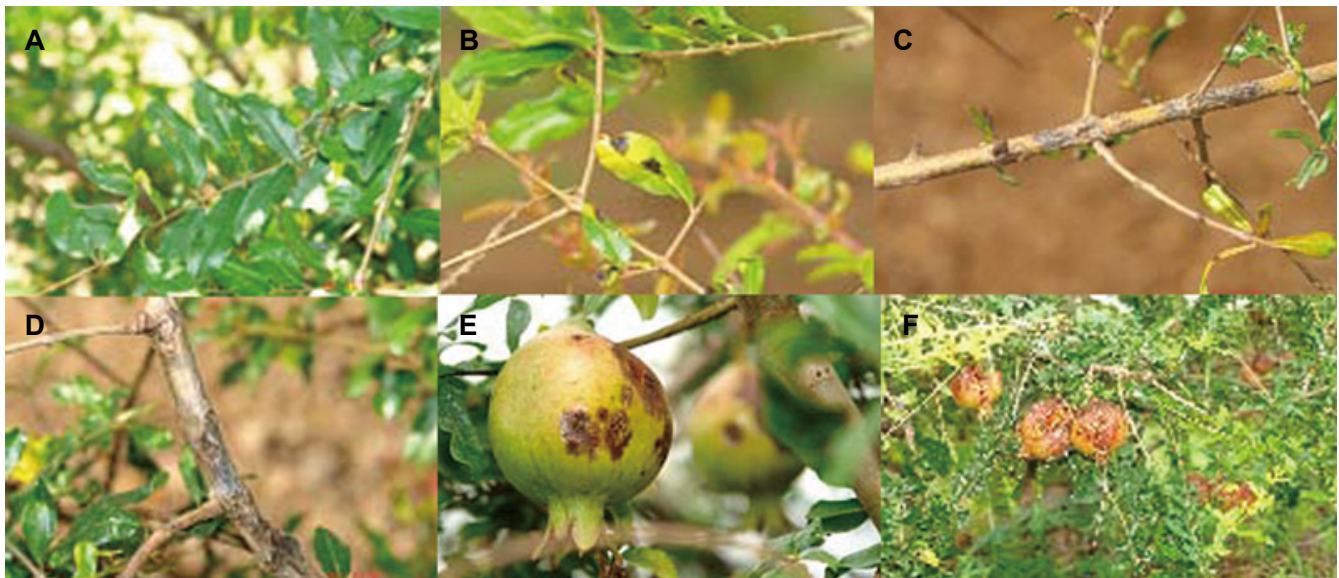
State	No. of orchards surveyed	*Bacterial blight prevalence (%)	**Blight severity (%)		
			Severe	Moderate	Mild
Maharashtra	310	162 (52.25)	41 (13.22)	45 (14.51)	76 (24.51)
Karnataka	36	21 (58.33)	00 (0.00)	10 (27.77)	11 (33.05)
Andhra Pradesh	23	10 (43.47)	04 (17.39)	05 (21.73)	01 (4.34)
Total	369	193 (52.30)	45 (12.19)	60 (16.26)	88 (23.84)

\*Blight prevalence: per cent orchards revealing blight infections (%) out of total surveyed.

\*\*Blight severity: Severe: per cent Orchards with blight severity > 40.0%; Moderate: per cent Orchards with blight severity 11.0 -40.0%; Mild: per cent Orchards with blight severity ≤ 10.0%.



**Fig. 1** India's map showing states severely affected with bacterial blight and period of blight occurrence.



**Fig. 2** Blight in pomegranate. (A) Blight lesions on foliage with translucent halo. (B) Advanced blight lesions on foliage. (C) Blight lesions on stem. (D) Severely blight infected stem revealing girdling. (E) Fruit having blight lesions with fissures. (F) Blight infected fruits revealing cracking.